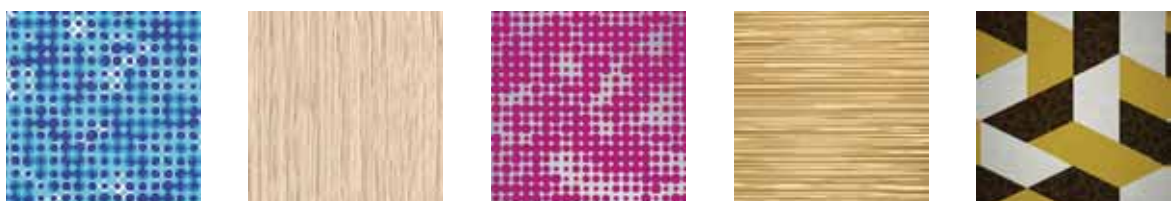


# KONE DESIGN COLLECTION

Materials and accessories

# TABLE OF CONTENT

CREATING AN ELEVATOR	4
WALL FINISHES	6
FLOOR FINISHES	8
FRONT WALL FINISHES	9
DOOR FINISHES	10
SIGNALIZATIONS	11
HANDRAILS	15
CEILINGS	16
BUFFER RAILS	18
SKIRTING	18
TENANT DIRECTORIES	18
MIRRORS	18



# Creating the perfect elevator

When it comes to creating a consistent look and feel throughout your building, elevators play a key role. By freely combining KONE's flexible and versatile selection of materials and accessories, you can create an elevator interior that matches your building's design perfectly.

## How to create your custom elevator design

- ### 1 Choose the combination of wall, floor, and door material

Our wide range of available choices ensures that you can find the perfect combination to match your building's design, budget, and intended use requirements. For example, if durability and comfort are important, stone flooring is long-lasting and maintains its appearance even under heavy use, while colored or wood laminate wall finishes help to create a warm ambience inside the car. For a more exclusive look and feel, our new patterned steel and 3D glass finishes can really make your elevator stand out.
- ### 2 Select your ceiling design

KONE offers a wide range of different ceiling designs, equipped with modern and innovative lighting solutions that help create just the right atmosphere inside the elevator. Our ceilings are designed to give the best possible lighting quality while avoiding glare, ensuring every elevator trip is a pleasant and safe one. KONE's lighting solutions are also energy efficient – our LED lights use 80% less energy than traditional halogen lights.
- ### 3 Choose your accessories

Our accessories are designed to increase convenience for passengers, and include options such as handrails, seats, car operating panels, information screens, and tenant directories. KONE accessories have been designed to meet the specific requirements of different users and building types. For example, we offer special graphics designed for car operating panels in senior housing and children's hospitals, as well as customizable solutions for office, hotel, and retail environments.

## Materials and accessories for all purposes

This catalog presents our complete selection of elevator car interior materials and accessories. The options are grouped into three categories: BASIC, STANDARD and PREMIUM. The basic materials are marked with **B**, standard with **S** & premium with **P**.

Each carefully selected item has been designed to be both visually appealing and functional. For more design inspiration, take a look at the KONE Design Collection car interiors and create your own design with the KONE Car Designer tool. Consult your KONE sales contact to discuss your final interior selection and for any additional information and support.

# Selectable car elements

Ceiling

Rear wall

Car Operating Panel (COP)

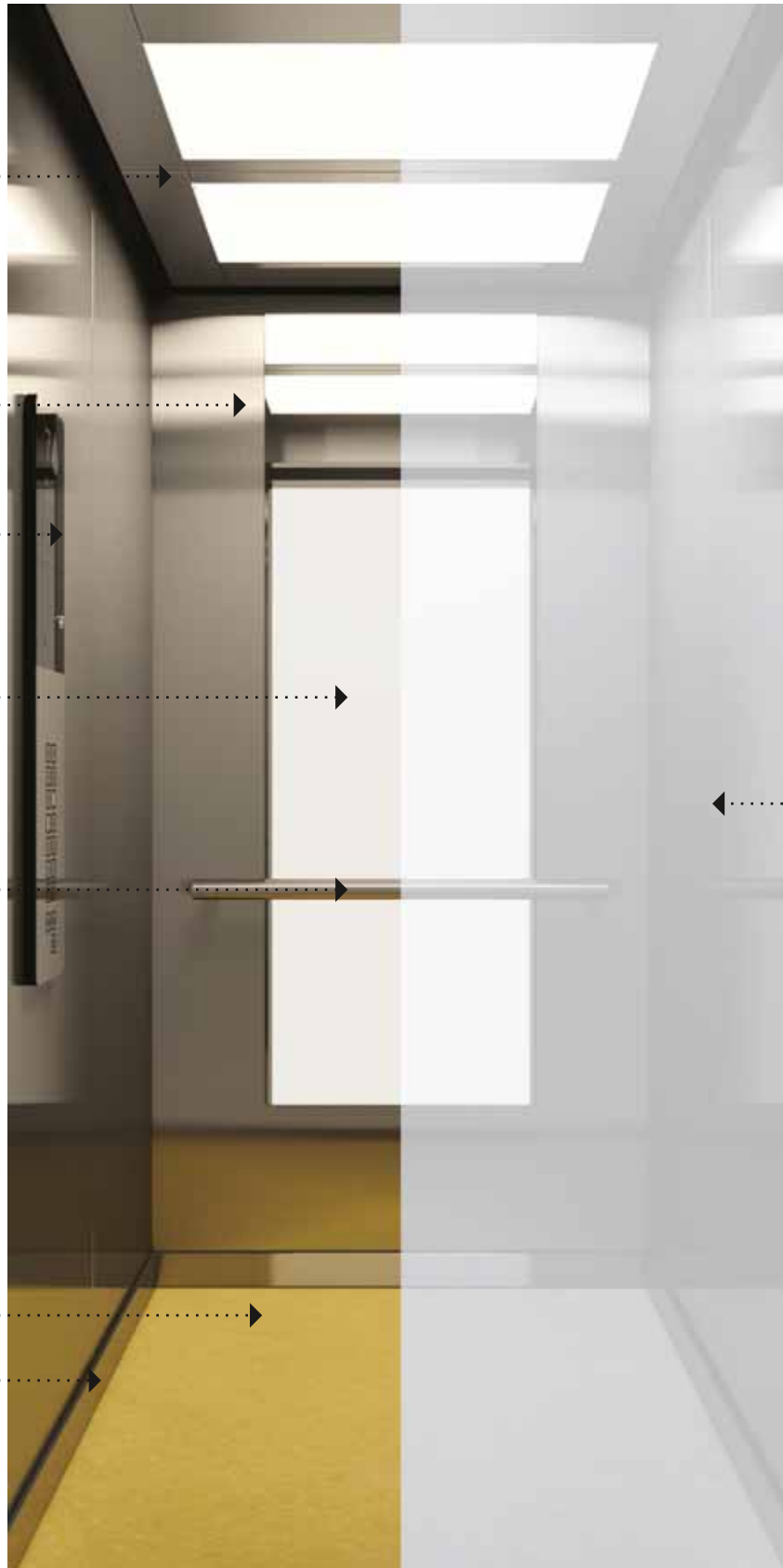
Mirror

Handrail

Floor

Skirting

Side wall



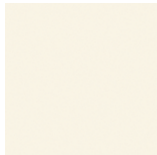
**Note:**  
The front wall panels and car door which are not shown in the picture complete the elevator car.



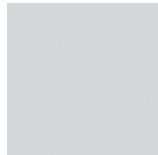
reddot design award  
winner 2012

## Painted steel

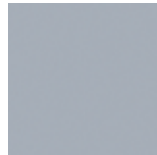
B S



PP101  
Casablanca white



PP102  
Light Grey



PP103  
Dark Grey



METP104  
Metallic Pearl Beige



METP105  
Metallic Dark Red



METP 106  
Metallic Orange



METP107  
Metallic Yellow



METP108  
Metallic Light Blue



METP109  
Metallic Dark Blue



METP110  
Metallic Beige



METP111  
Metallic Green



METP 112  
Metallic Light Green

## Brushed stainless steel

B S P



ST43  
Silver (Hairline Stainless steel)

## Brushed gold stainless steel

S P



ST2  
Golden (Gold hairline stainless steel)

## Textured stainless steel

S P



TS11  
Scottish Quad



TS12  
Flemish Linen



TS14  
Silver Sand  
(Vandal Proof)



TS13  
Golden Linen

## Mirror finished stainless steel

S P



MP1  
Mirror Silver



MP2  
Mirror Gold



MP11  
Mirror Rose Gold



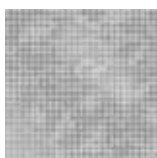
MP12  
Sapphire Blue



MP5  
Mirror Black

## Etched stainless steel (on silver mirror polished stainless steel)

S



ST42S  
Silver Cloud



ST34S  
Silver Diamond



ST41S  
Silver Bamboo



ST31S  
Silver Highrise

Etched stainless steel (on gold mirror polished stainless steel)

P



ST42G  
Golden Cloud



ST34G  
Golden Diamond



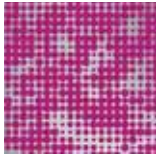
ST41G  
Golden Bamboo



ST31G  
Golden Highrise

Printed stainless steel

P



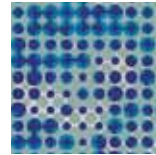
PS8  
Dot Cloud



PS7  
Delicate Cool



PS5  
Radiant Bamboo



PS6  
HongKong Lights

Laminates, (wood finish)

P



L301  
Golden Oak



L302  
Brown Linosa



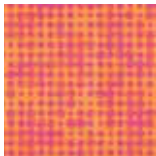
L303  
Canadian Walnut



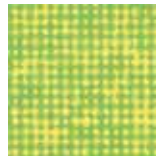
L304  
Macassar Ebony

Deco Film

S



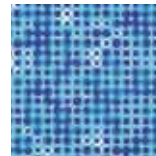
DE1  
Sunset



DE2  
Sunlight



DE3  
Twilight



DE4  
Dawn

Transparent Glass

P



G201  
Transparent Glass

Color glass

P



G202  
Lustrous Yellow



G203  
Lustrous Red



G204  
Lustrous Blue



G205  
Lustrous Light Blue



G206  
Lustrous White



G207  
Lustrous Black

Printed / Etched glass

P



G211  
Crystal Garden  
White



G212  
Paradise Lily  
Magenta



G11  
Classic Bamboo



G8  
Blue Flow



G213  
Transparent Dots



G214  
Transparent Bamboo

## Vinyl

B S



D102  
Silver Black



D103  
Smoke Grey



D104  
Regal Red



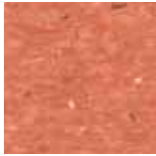
D105  
Sandstone



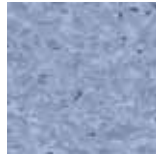
D106  
Corn Yellow



D107  
Spring green



D108  
Blood Orange



D109  
Violet Blue

## Patterned vinyl

B S



DG05  
Legno



DG11  
Strings



DG12  
Chakra



DG06  
Blusher



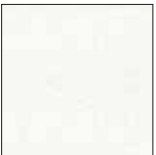
DG13  
Silver Maze



DG14  
Color Maze

## Stone

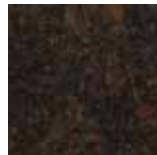
S P



DS101  
White Stone



DS102  
Peach Stone



DS103  
Brown Stone



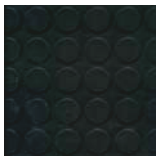
DS104  
Jet Black Granite



DS 105  
Sparkling Black Stone

## PVC - Coin pattern

S



D101  
Black Dots

## Chequered plates



DM1  
Steel Chequered



DM2  
Stainless Steel (SS)  
Chequered



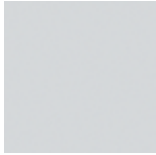
DM3  
Aluminum Chequered

**Note:**  
Chequered plates are for freight elevators



## Painted steel

B S

PP102  
Light GreyPP103  
Dark GreyMETP104  
Metallic Pearl Beige

## Brushed stainless steel

B S P

ST43  
Silver  
(Hairline  
Stainless steel)ST2  
Golden  
(Gold Hairline  
Stainless steel)

## Mirror Finished stainless steel

S P

MP1  
Mirror SilverMP2  
Mirror Gold

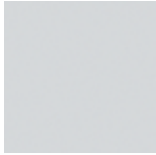
## Textured stainless steel

S P

TS11  
Scottish QuadTS12  
Flemish LinenTS14  
Silver Sand  
(Vandal Proof)TS13  
Golden Linen

Painted steel

B S



PP102  
Light Grey



PP103  
Dark Grey



METP104  
Metallic Pear Beige

Brushed stainless steel

B S P



ST43  
Silver  
(Hairline  
Stainless steel)



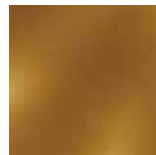
ST2  
Golden  
(Hairline  
Stainless steel)

Mirror finished stainless steel

S P



MP1  
Silver Mirror



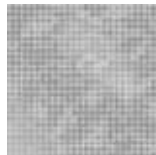
MP2  
Gold Mirror

Etched steel (Silver)

S

Etched steel (Gold)

P



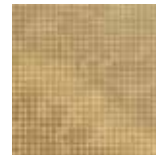
ST42S  
Silver Cloud



ST41S  
Silver Bamboo



ST31S  
Silver Highrise



ST42G  
Golden Cloud



ST41G  
Golden Bamboo



ST31G  
Golden Highrise

Textured stainless steel

S P



TS11  
Scottish Quad



TS12  
Flemish Linen



TS14  
Silver Sand  
(Vandal Proof)



TS13  
Golden Linen

Transparent glass

P

Etched transparent glass

P



G201  
Transparent Glass



G 213  
Transparent Dots



G 214  
Transparent Bamboo

**Note:**  
The doors are provided as a standard with narrow door frame. For other door frames such as broader frames and with transom contact our sales team.

This functional new signalization family for residential buildings combines clear and simple features, good visibility, and easy accessibility with a sophisticated design.

The KSS 280 signalization family features durable finishing with hairline stainless steel surfaces and alphanumeric LCD displays.

The Car operating panel (COP) in the elevator car and the landing devices are surface mounted.

**Key Features**

- Durable finishing with hair line brushed stainless steel surface
- High-contrast display with segmented LCD for alphanumeric character display (COP & Landings)
- 7 segment LCD option for landing (LCI only)
- Pin code operations



**Car Operating Panel (COP)**



**PH COP:**  
Brushed Stainless steel  
Poly carbonate lens finishing  
Floor range 2-28

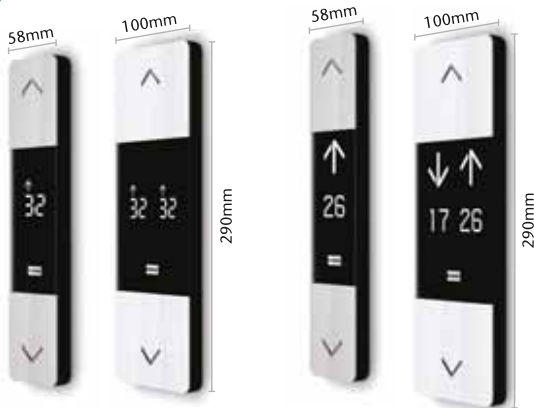
White segmented LCD display with Backlight dimming

Bold 50mm high digit for easy visibility

Tactile marking on button  
Green main floor button  
Door open, Door close, Alarm buttons.

186mm  
Partial Height (PH)

**Landing Call Indicator (LCI)**



Simplex Duplex  
White 7 Segment LCD

Simplex Duplex  
White Segmented LCD

**Landing Call Station (LCS)**



**Hall Indicator (HI) / Hall Lantern Indicator (HLI)**



Car Operating Panel (COP)

CAR OPERATING PANEL

**Partial Height**  
Max 24 floors

**COP Mounting Method**  
• Surface mounted

**Faceplate Material**  
• Glossy, Durable poly carbonate

**COP Faceplate**  
• Pre-designed solid colors & printed patterns

**Frame**  
• Elegant aluminum frame with satin finish

**Buttons**  
• Round tactile flush mounted silver mirror polished  
• Amber / White LED

**Display Type**  
• Dotmatrix  
• Amber / White color



LANDING FACEPLATE

**Pre-Designed Solid Colors**  
• Ivory Black  
• Snow White  
• Blue  
• Green  
• Brown

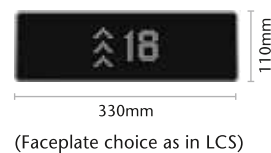
Landing Call Station (LCS)



Landing Call Indicator (LCI)



Hall Indicator (HI)



**Partial Height:**

- Max 16 Floors

**Faceplate Material**

- Hairline stainless steel
- Black acrylic / Stainless steel

**Display Type**

- 7 segment, Red
- Dotmatrix, Red
- Segmented monochrome LCD (SMLCD)
  - White on Blue background
  - White on Black background

**Button Type**

- Round surface mounted

**Button Finish & LED Color**

- Black with Red LED
- Stainless steel with Red LED
- Stainless steel with White LED (Braille option available only with Stainless steel button)

**Mounting**

- COP: Flush mounted
- CI: Flush mounted / Surface mounted on lintel

**Landing Devices**

- Surface mounted

**Car Operating Panel (COP)**



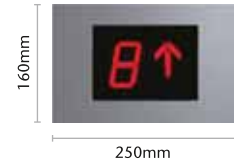
Partial height (PH)<sup>†</sup>

<sup>†</sup>Partial height COP comes with integrated emergency light up to 10 passenger only.

**Car Indicator (CI)**



- 7 segment
- Surface mounted



- 7 segment
- Dotmatrix
- Flush mounted



- SMLCD
- Flush mounted

**Landing Call Indicator (LCI)**



- Simplex
- 7 segment
  - Dotmatrix
  - SMLCD



- Duplex
- 7 segment
  - Dotmatrix
  - SMLCD

**Landing Call Station (LCS)**



**Hall Indicator (HI)**



- 7 segment
- Dotmatrix
- SMLCD

**Buttons**



Stainless steel with White LED



Black with Red LED



Stainless steel with Red LED



Stainless steel with White LED & Braille

**Partial Height:**

- Max 16 Floors

**Full Height:**

- Max 63 Floors

**COP Mounting**

- Flush mounted

**Faceplate Material\***

- Standard: Hairline stainless steel

**Display Type**

- 7 segment (Red, Yellow, White)
- Dotmatrix (Red, Yellow, White)
- Segmented monochrome LCD (SMLCD)
  - White on Blue background
  - White on Black background
- Monochrome LCD (LCDM)
- Color LCD (LCDC)
- Full Color Display (FCD)
  - Diagonal 260mm

**Button Shape**

- Round
- Square

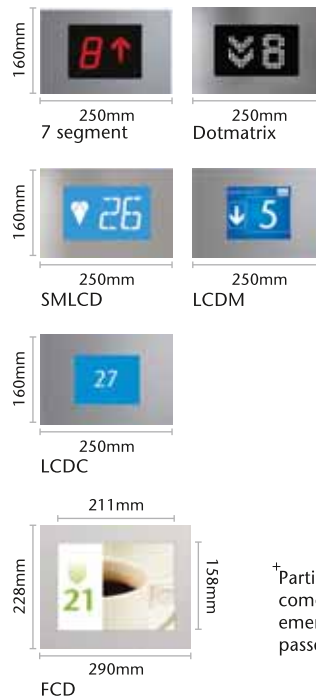
**Button Mounting**

- Flush mounted
- Surface mounted

**LED Color**

- Red
- Yellow
- White

**Car Indicator (CI)**



**Car Operating Panel (COP)**



<sup>+</sup>Partial height COP comes with integrated emergency light up to 10 passenger only.

<sup>\*\*</sup>Height of the full height COP varies according to the car size.

**Landing Call Indicator (LCI)**

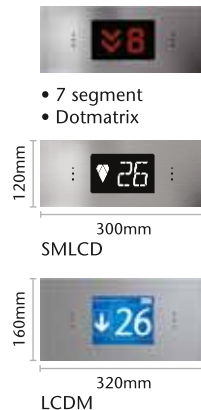


- 7 segment
- Dotmatrix
- SMLCD

**Landing Call Station (LCS)**

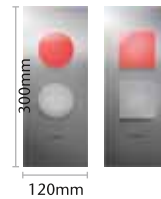


**Hall Indicator (HI)**



- 7 segment
- Dotmatrix

**Hall Lantern (HL)**



- Round
- Square

**Hall Lantern Indicator (HLI)**



- 7 segment
- Dotmatrix

**Special Digital Display (SDD)**



Dotmatrix, 424 mm, red, yellow or combination of yellow digit with red and green arrows.

Display characters are 60mm high.

**Buttons**



Brushed Gold with White LED

- Surface mounted

Hairline stainless steel with White LED

- Flush mounted

Mirror polish stainless steel with White LED

- Surface mounted

Hairline stainless steel with White LED

- Flush mounted

Stainless steel with White LED & Braille

- Surface mounted

\*For full height COP the faceplate and the buttons are available with following special finishes  
a) Gold hairline b) Gold mirror c) Stainless steel mirror. Please contact our sales team for details.

HR31 **B**



Finishings: Aluminum center tube with plastic black straight end caps

HR34 **B**



Finishings: Aluminum center tube with plastic black bent end caps

HR61 **S P**



Finishings: Silver hairline round tubular with straight ends  
Options: Silver mirror polish stainless steel

HR64 **S P**



Finishings: Silver hairline round tubular with bent ends  
Option: Gold hairline stainless steel

HR65 **S P**



Finishings: Silver hairline triangle tubular with bent ends  
Options: Silver mirror polish stainless steel (or) Gold mirror polish stainless steel

HR63 **P**



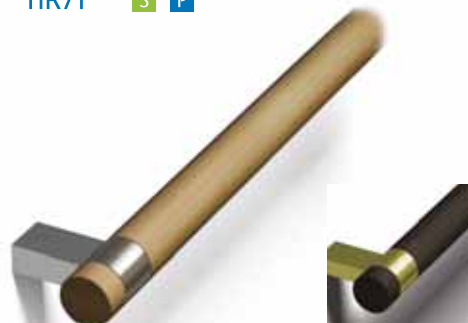
Finishings: Silver mirror polish stainless steel with flat tube  
Option: Gold mirror polish stainless steel

HR81 **P**



Finishings: Silver hairline round tubular with floor mount  
Options: Silver mirror polish stainless steel (or) Gold hairline stainless steel

HR71 **S P**



Finishings: Light wooden tube with hairline stainless steel clamps  
Option: Dark wooden tube with gold hairline stainless steel clamps

CLF1

B S



Lighting: CFL Round Spotlights  
 Finishings: PP101 Painted Casablanca White (or)  
 ST43 Silver

CLF2

B S



Lighting: T5 fluorescent tubes  
 Finishings: PP101 Painted Casablanca White (or)  
 ST43 Silver

CL91

B S



Lighting: T5 fluorescent tubes  
 Finishings: PP101 Painted Casablanca White (or)  
 ST43 Silver

CL94

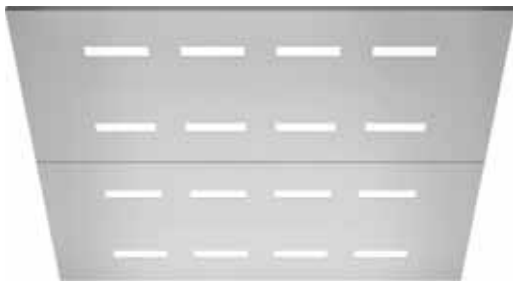
B S



Lighting: T5 fluorescent tubes  
 Finishings: PP101 Painted Casablanca White (or)  
 ST43 Silver

CL103

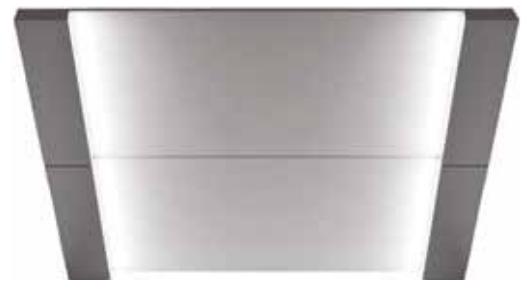
B S



Lighting: T5 fluorescent tubes  
 Finishings: PP101 Painted Casablanca White (or)  
 ST43 Silver

CL95

B S



Lighting: T5 fluorescent tubes  
 Finishings: Middle: PP101 Painted Casablanca White  
 Side Frames: ST43 Silver (or) MP1 Silver

CL71

B S



Lighting: T5 fluorescent tubes  
 Finishings: PP101 Painted Casablanca White (or)  
 ST43 Silver

CL88

P S

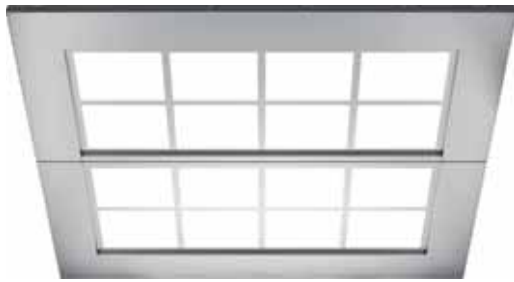


Lighting: LED spotlights, round  
 Finishings: ST43 Silver (or) MP1 Silver (or)  
 MP2 Golden



CL70

S P



Lighting: T5 fluorescent tubes  
 Finishings: ST43 Silver (or) MP1 Silver (or)  
 MP2 Golden

CL192

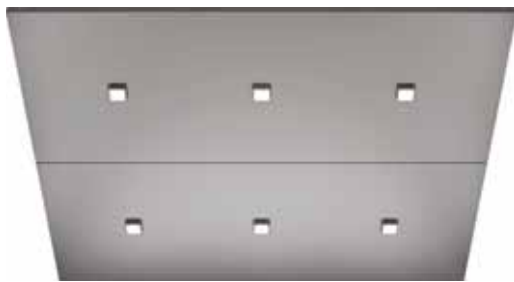
S



Lighting: T5 fluorescent tubes  
 Finishings: ST43 Silver

CL97

S P



Lighting: LED spotlights, square  
 Finishings: ST43 Silver (or) MP1 Silver (or)  
 MP2 Golden

CL162

P



Lighting: Direct / indirect lighting  
 T5 fluorescent tubes +  
 LED spotlights, square  
 Finishings: Base: PP101 Painted Casablanca White  
 Drop down ceiling: MP1 Silver (or) MP2 Golden

CL191

S



Lighting: T5 fluorescent tubes, Round LED Spotlights  
 Finishings: ST43 Silver

CL151

P



Lighting: LED  
 Finishings: ST43 Silver + Plain White Acrylic (or)  
 MP2 Golden + Plain White Acrylic (or)  
 ST43 Silver + Cloud Dot Acrylic (or)  
 MP2 Golden + Cloud Dot Acrylic (or)  
 ST43 Silver + Bamboo Acrylic (or)  
 MP2 Golden + Bamboo Acrylic



Plain White  
 Acrylic



Cloud Dot  
 Acrylic



Bamboo  
 Acrylic

**Note:**  
 The number of lights and fans will vary according to car sizes



Light Wood



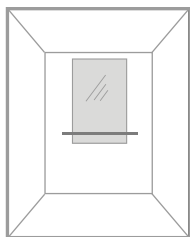
Twilight Black Rubber



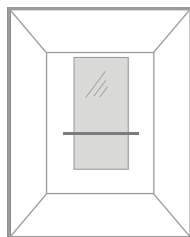
Finish: ST43 Silver  
ST2 Brushed Gold



TD1 / TD2 (A3, A4)



MR1  
Partial width/Partial height

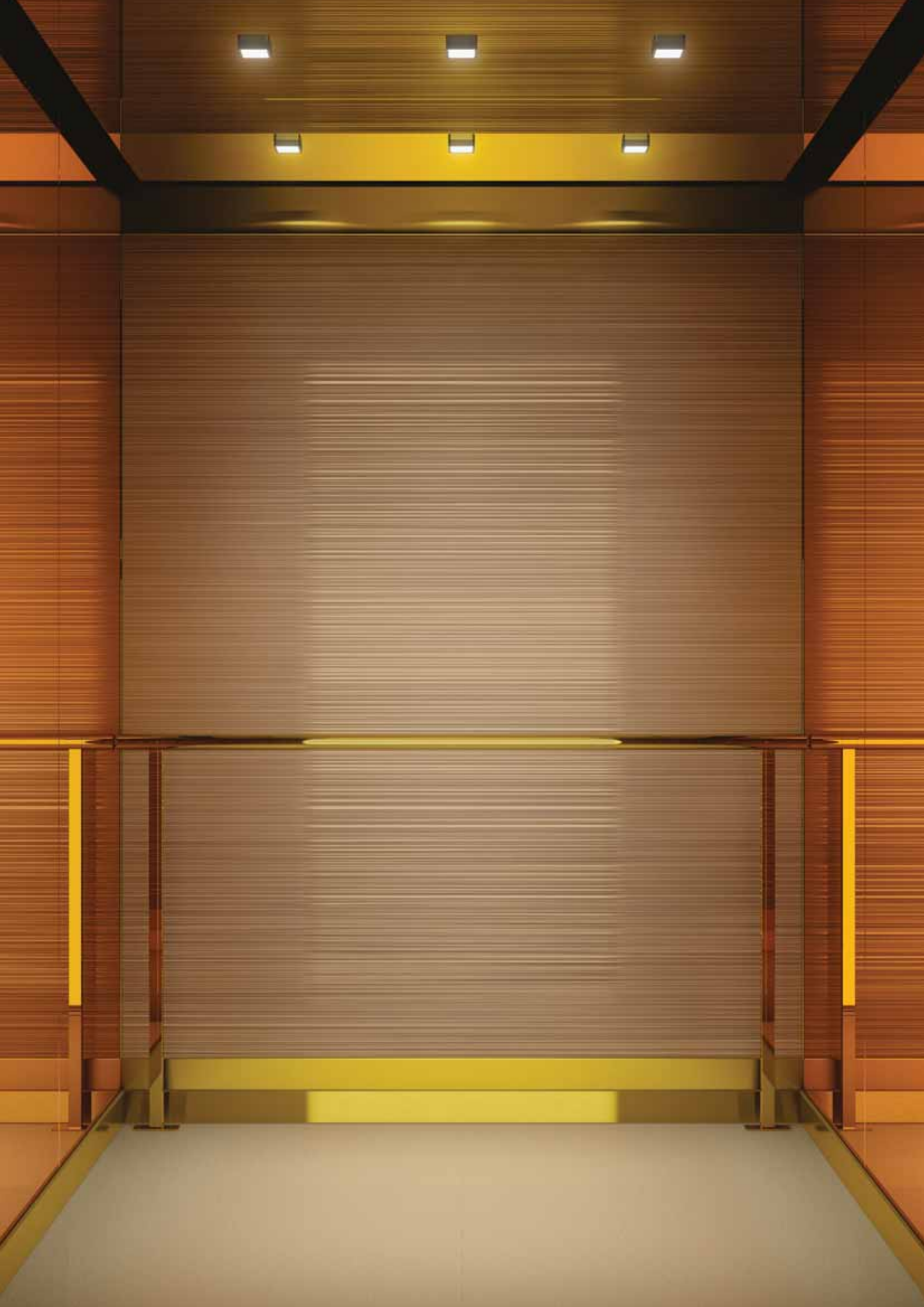


MR2  
Partial width/Mid height

SIZES AND POSITIONING

Mirrors can be located on the rear or side wall of the elevator car. The handrail dimensions will vary according to the mirror type selected.

Mirror dimensions may vary depending on the car size. Please consult your KONE sales representative for details.



KONE provides innovative and eco-efficient solutions for elevators, escalators, automatic building doors and the systems that integrate them with today's intelligent buildings.

We support our customers every step of the way; from design, manufacturing and installation to maintenance and modernization. KONE is a global leader in helping our customers manage the smooth flow of people and goods throughout their buildings.

Our commitment to customers is present in all KONE solutions. This makes us a reliable partner throughout the life cycle of the building. We challenge the conventional wisdom of the industry. We are fast, flexible, and we have a well-deserved reputation as a technology leader, with such innovations as KONE MonoSpace®, KONE EcoMod™ and KONE UltraRope®.

KONE employs on average 50,000 dedicated experts to serve you globally and locally.

KONE India, with a nation-wide network and about 4,000 employees, is committed to its customers for the entire life cycle of its each and every product.

KONE Elevator India Private Limited

**Factory and Registered Office:**

50, Vanagaram Road, Ayanambakkam  
Chennai - 600 095. India  
Tel. No. +91 44 6660 3900

**Corporate Office:**

Prestige Centre Court, 9th Floor, The Forum  
Vijaya Mall, No. 183, NSK Salai, Arcot Road,  
Vadapalani, Chennai – 600 026. India  
Ph. +91 44 6625 4000

Toll Free Service Number:

1800 108 1234 / 1800 425 4254

**Contact person:**

Tel. No:

Visit us at [www.KONE.in](http://www.KONE.in)



Scan this code  
to visit the official  
webpage