

The KONE logo is positioned in the top right corner. It consists of the word "KONE" in white, uppercase, sans-serif font, with each letter contained within a separate blue square.

KONE

A silhouette of a person stands in the center of an open elevator shaft, looking out at a city skyline. The shaft is lined with glass, and the floor is made of dark, reflective tiles. The lighting is dramatic, with a bright blue glow emanating from the open doors.

KONE I MonoSpace® | KONE I MiniSpace™

SMART

A person stands in the center of a modern, glass-walled elevator shaft. The shaft is illuminated by bright light from the open doors at the top, creating a strong silhouette effect. The surrounding building structure is visible through the glass walls, showing a complex network of pipes and structural elements. The floor of the shaft is made of large, reflective tiles.

Born with a DIGITAL DNA

KONE I MonoSpace® SMART and I MiniSpace™ SMART elevators are unlike anything out there. They are a powerhouse in vertical mobility taking safety, connectivity, sustainability, and ride comfort to the next level.

Failsafe Technology

Enabled by PESSRAL based architecture, the electro-mechanical safety system is augmented by programmable electronic safety.

Future Ready Connectivity

Equipped to connect through APIs, opening the door to countless possibilities and adaptable for future innovations.

Energy-efficient Design

Sustainable and energy-efficient design to help reduce your building's carbon footprint.



Safety, Fortified

Enabled by the PESSRAL architecture, conventional safety system is fortified by programmable electronic safety system. No compromises-just seamless, unyielding safety, ensuring maximum protection at every level.

Smartest safety system ever built

Failsafe Redundancy

The new design ensures redundancy and automatic trigger of machine in safe mode with dual channel safety controller.

Early Detection of Failure

Programmable intelligent mechanism, capable of early detection and reporting of anomalies failure before any safety incident occurs.

Zero-bypass Safety

Certified safety software to deter unauthorized bypass of the safety module, ensuring highest level of elevator safety.

Fortified Door System

High-strength door design with entry and exit safety, further enhanced with a curtain of light and better rating.

What is PESSRAL?

Programmable Electronic System in Safety Related Applications for Lifts, that uses failsafe electronics and software to monitor the safety chain.

KONE I MonoSpace® SMART and I MiniSpace™ SMART complies to IEC 61508 (SIL 3).

Future-Ready Connectivity

Advanced connectivity that is smart, secured, and built to adapt and evolve for future digital needs of your building.

Built-in connectivity for today and beyond



Plug and Play Connectivity

All your other building technology can be connected from remote calling to your commercial property's HVAC system.



Contactless Access*

Smart key or badge to access the lobby door.



Less Waiting Time*

Comfort of calling the elevator from your mobile to reduce wait time.



Enhanced Building Security*

Integration of services like voice or face recognition that helps access control or identify unwanted visitors.



Real-time Elevator Monitoring

Round-the-clock monitoring of elevator, helps us take care of it for you, now and in the future.

End-to-end cybersecurity

Designed with cybersecurity in mind from the start. We follow secure software development processes to embed cybersecurity and privacy into our digital solutions throughout their lifespan. Our secure development lifecycle (SDL) process is certified to IEC 62443-4-1 issued by TÜV Rheinland.

*Features can be availed through APIs with the building's digital services partner

Energy Reinvented

Save energy and cut your building's carbon footprint with our eco-efficient and standby solutions.

Best-in-class energy efficiency

Regenerative Drive*

KONE's regenerative solutions reduce elevator energy consumption by up to 30%.

LED Lighting

Uses up to 90% less energy and lasts up to 25 times longer than traditional radiant bulbs.

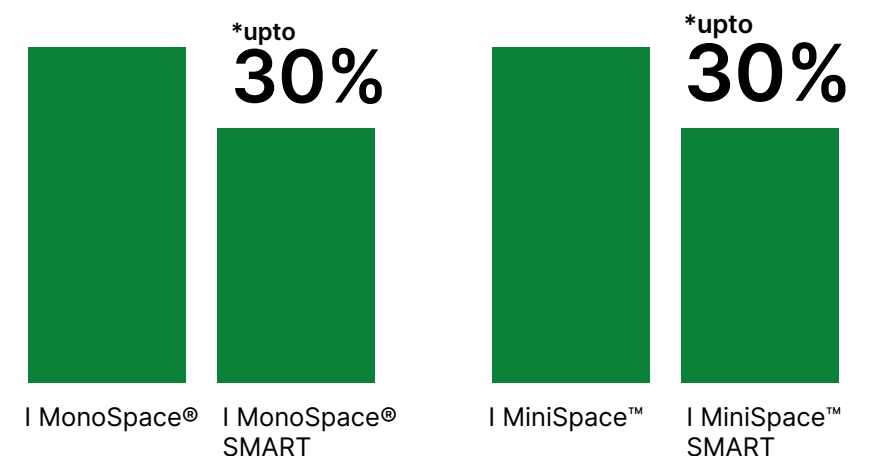
Standby Mode

Up to 10% saving when the elevator is not in use for 5 minutes and longer.

In-built THD Filter

Lower total harmonic distortion reduces adverse effect on the building's power network.

***KONE I MonoSpace® SMART and I MiniSpace™ SMART elevators include a regenerative drive as an optional offering. KONE regenerative drive captures energy released when the elevator travels up and down and recycles it for use by other building systems.**





Complete peace of mind

Enjoy peace of mind with predictive maintenance using the latest connected elevator technology.

Smart predictive maintenance

Anticipates service needs with a proactive approach that combines expert knowledge and AI-based data analytics. Predictive maintenance uses the latest technology to reduce unexpected repairs and enables fact-based planning for elevators.

More uptime and less
reactive work

55%

fewer customer-reported
elevator issues over a
3-year period

Reduces unplanned
work

80%

of faults identified
proactively

Improves safety for
tenants and users

40%

fewer customer-reported
entrapments

Comprehensive
plan for the future

360°

Lifecycle approach for
repairs, upgrades and
renewals

KONE 24/7 Connected Services

Real-time monitoring and intelligent data analysis allows us to anticipate maintenance needs and respond to equipment related issues proactively.



Inspired Car Designs

Award winning finishes with innovative usage of materials, that create a ride experience like never before.

5 Natural elements expressed in stunning finishes

KONE I MonoSpace® SMART and KONE I MiniSpace™ SMART designs are inspired by the five elements of nature and come in many distinct finishes. Along with the popular painted finish, the car interiors are offered in attractive finishes such as Wood Fusion, Art Deco, Stainless Steel and Exotic Motif.

35 Car designs to
match your building interiors



reddot design award
winner 2022
Product Design Category

“The KONE I elevator series succeeds in conclusively expressing cultural context in its design ideas, turning a lift ride into an impressive experience”

- Jury Statement



SunGlow

TOUCH OF THE MORNING RAYS



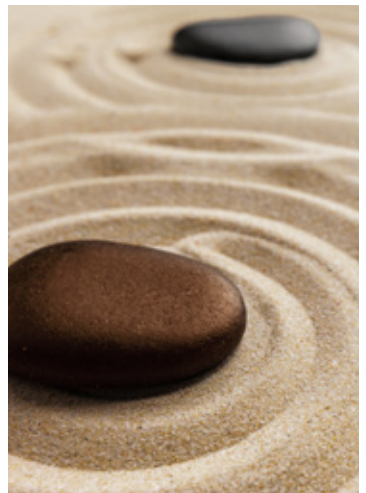
DewDrop

SERENE FLOW DAY AFTER DAY



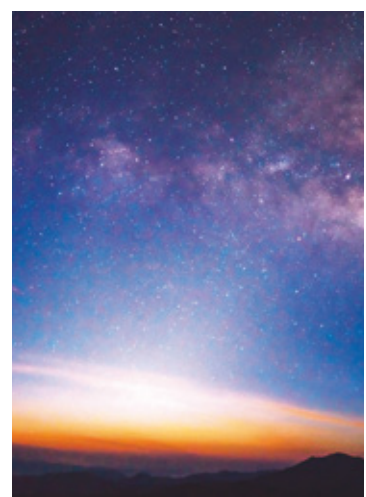
CoolBreeze

FEEL LIGHT IN EVERY RIDE



SandStone

SOLID EXPERIENCES THAT STAY
FOREVER



MilkyWay

LIMITS PUSHED LITTLE FURTHER

Designs speak finishes

Artistic finishes for passionately created interiors



Allure of art

Exciting and opulent design style presented in floral, ripple and layered patterns- bringing glamour and flair to your buildings while retaining the modern look.



Shades of nature

Vibrant and subtle colours carefully chosen for their affinity with the natural elements, powder coated with finesse at one of the world's most advanced automated painting plant.



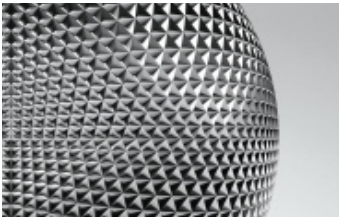
Looks wood. Looks good.

The exquisiteness of the coveted wood finishes in attractive combinations with mirror polished stainless steel, presented in enticing patterns.



Grandeur redefined

Mesmerizing patterns made immortal in gold finish, copper tinge and rich hues designed to enhance the premium quotient.



Timeless elegance

Classic stainless steel paired with tradition and cultural significance, sporting the values of evergreen design patterns of the yore.

Designs speak features

Value adding unique characteristics



Fulfilling ornamental requirements

Decorative designs that gloriously flow in seamless Floral, Layer and Ripple patterns. Etched designs engraved for posterity with advanced technology.



Chamfered corners

Functional design that makes it easier to clean the corners while giving a new fresh look to the interiors.



Complementing trends that celebrate heritage

Modern versions of traditional classic design patterns that cherish the timeless connect to culture.

- Heritage inspired pattern
- Nature inspired pattern
- Digital inspired pattern



Asymmetric abstract design

Unconventional design style that is bold, inviting and pleasantly soothing with a choice of vibrant colours.



Keeping it modern with stainless steel

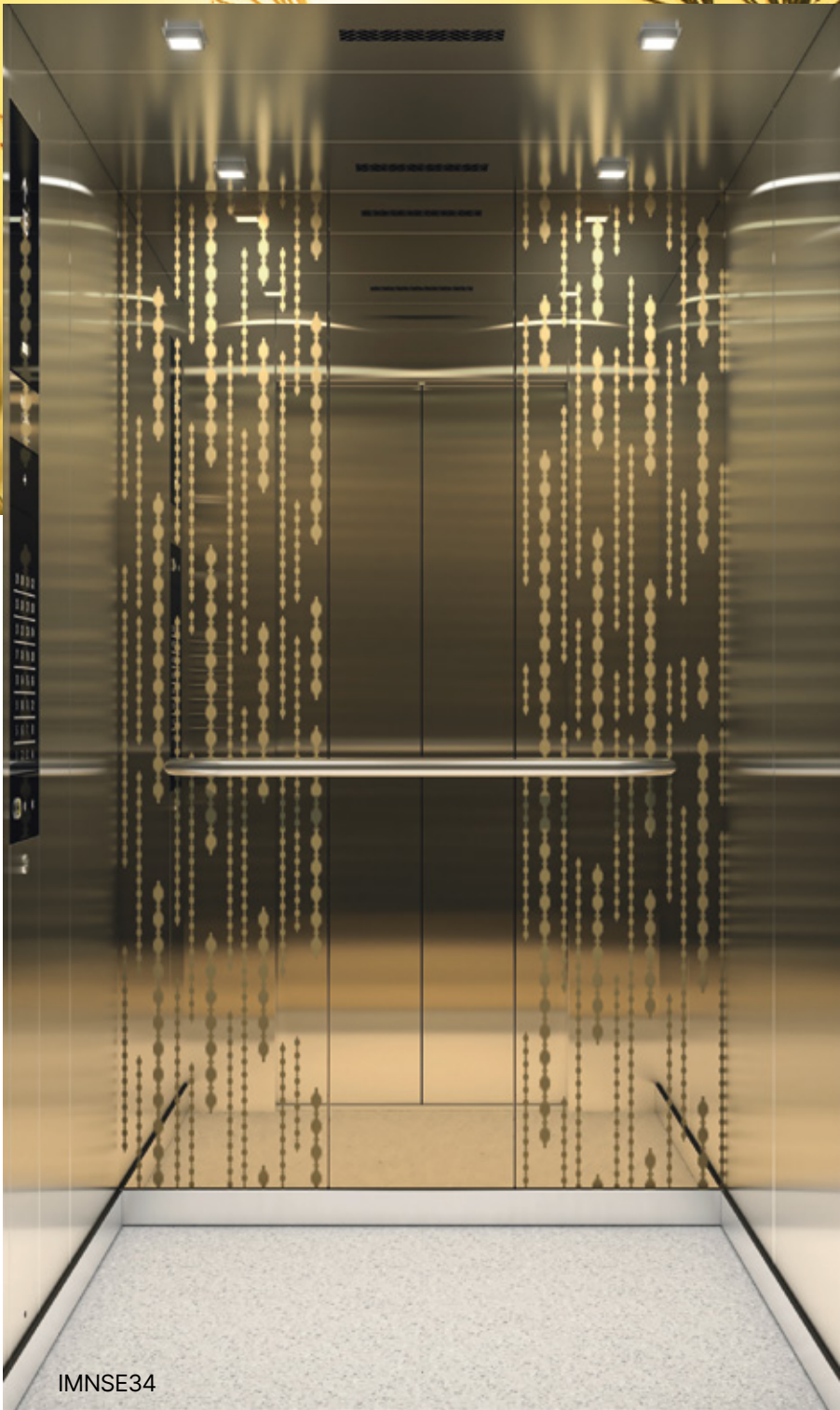
The most preferred metal for modern buildings now in multiple finishes and delightful tints such as Lustrous Gold, Rose Gold, Burnished Copper, Mystic Black, Cosmic Blue and Classic Silver in hairline and vandal proof finish.

SunGlow

TOUCH OF THE MORNING RAYS

Presented in three different finishes, the six-car collection exudes warmth, energy and sophistication. The three-panel construction of the rear stainless-steel panel is effortlessly diffused by grey flooring. The exclusive luminaire further accentuates the delicately pronounced ambience.

Element : Fire
Interior Finish : Solid Shades, Stainless Steel, Exotic Motif
Luminaires : Ring LED Light, Round LED Spot, Hue LED Spot & Square LED Spot



Exotic Motif
Gold etched and mirror polished stainless steel rear panel, stainless steel hairline side panels with LED lighting and KDS 96 full height touch/touchless COP.



Exotic Motif
Burnished copper tints and mirror polished stainless steel rear panel, stainless steel hairline side panels with LED lighting and KDS 96 full height touch/touchless COP



Stainless Steel
Rich rangoli artistry etched on hairline stainless steel rear panel with glowing patterns



Solid Shades
Energetic yellow, Sand beige and Water lily hues in exuberant combination, mirror polished stainless steel rear panel, bold flat handrails and hue LED spot lights.



DewDrop

SERENE FLOW DAY AFTER DAY

The seven cars collection inspired by the fluidity of the water element, creates a serene and soothing ambience. The free flowing Art Deco design with dual colours on the car walls and integrated COP makes for a great car experience.

Element : Water

Interior Finish : Solid Shades, Art Deco

Luminaires : Ring LED Light, Round LED Spot, Hue LED Spot & Square LED Spot



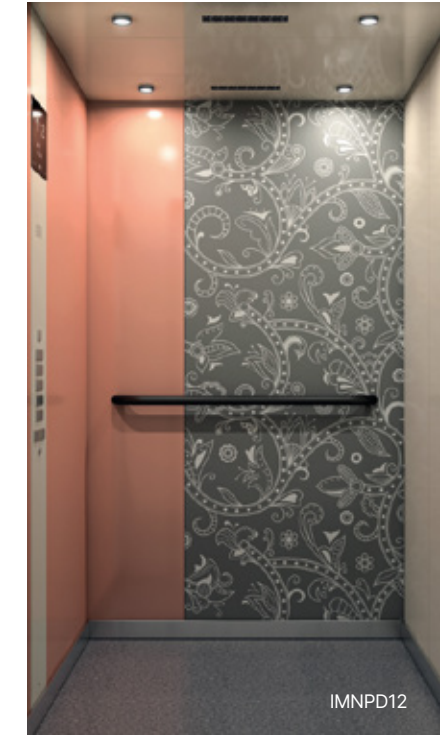
IMNPD13

Art Deco

Delicate floral pattern spreads out in the rear wall shored up by the brilliant blue colour, producing an instant connect with nature.



IMNPD11



IMNPD12



IMNPD31

Art Deco

Floral pattern combined with light green and beige red make for a stunning visual treat. Pearl white side walls create a sense of space and openness.

Art Deco

Flow texture in ripple effect on the center panel creates a beautiful balance between static and dynamic.



IMNDP11



IMNDP12



IMNDP13

Solid Shades

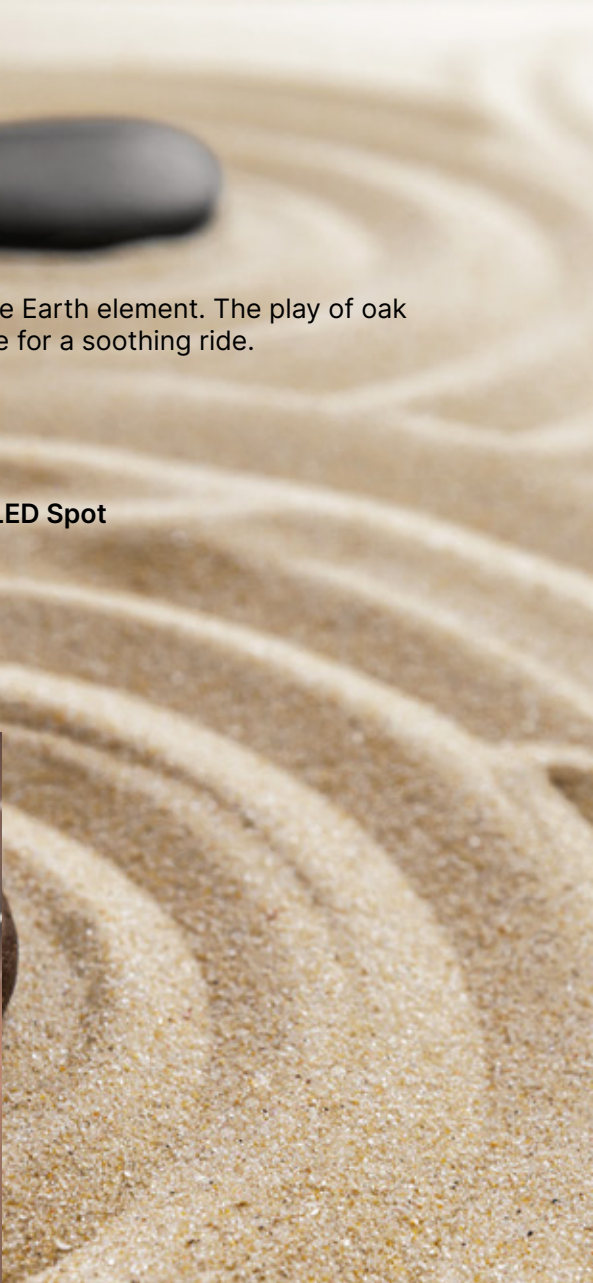
Asymmetric panel construction in Brilliant blue, Water lily and Energetic yellow contrasted with subtle shades, make the space vibrant and dynamic.

SandStone

SOLID EXPERIENCES THAT STAY FOREVER

The six cars collection in classic tones and wood finishes is rooted in the Earth element. The play of oak and walnut wood texture against the dual colours and LED lighting make for a soothing ride.

Element : Earth
Interior Finish : Solid Shades, Wood Fusion
Luminaires : Ring LED Light, Round LED Spot, Hue LED Spot & Square LED Spot



Wood Fusion
Etched pattern mirror polished stainless steel elegantly sandwiched between walnut wood textured pre-laminated metal walls.



Wood Fusion
Oak wood texture and stainless-steel effect using pre-laminated metal and round LED spots lights.



Wood Fusion
Walnut wood texture and stainless-steel effect using pre-laminated metal and round LED spots lights.



Solid Shades
Sand beige, Water lily and Rich beige red colour options in exuberant combination, with mirror polished stainless steel rear panel, bold flat handrails and Hue LED spot lights.

CoolBreeze

FEEL LIGHT IN EVERY RIDE

Six cars in cool hues and modern patterns, this collection of exclusive material combination, dynamic design flow, stunning visual appeal with LED lighting makes a cool breezy ride.

Element : Air

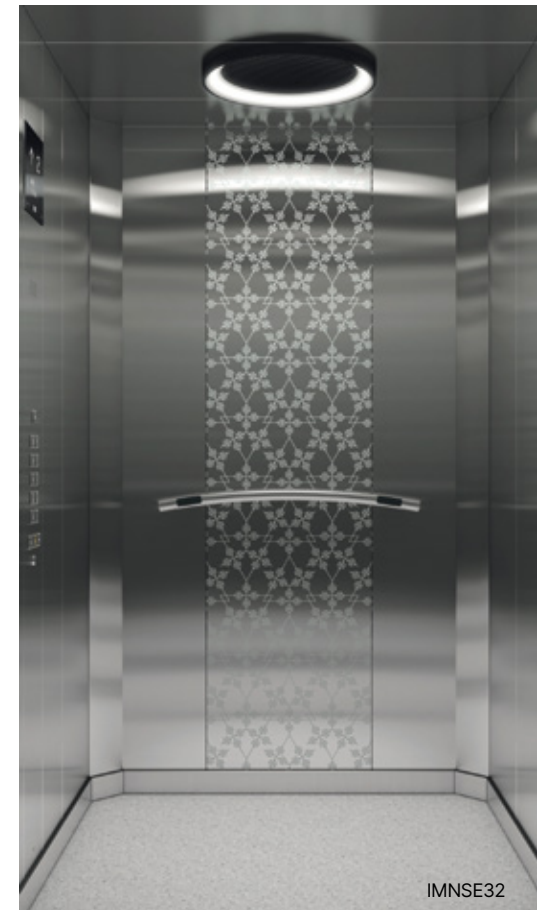
Interior Finish : Solid Shades, Art Deco, Wood Fusion, Stainless Steel

Luminaires : Ring LED Light, Round LED Spot, Hue LED Spot & Square LED Spot



Wood Fusion

Free flowing pattern of inter woven kasuti design etched stainless steel rear wall, in perfect blend with pre-laminated teak wood finish metal side walls.



Stainless Steel

Kasuti pattern etched as free flowing design on the rear wall with chamfered corners.



Art Deco

Decorative center-panel complemented by fully painted soft, pearl white walls



Solid Shades

Rich beige red, Brilliant blue and Sand beige hues with subtly shaded side walls and full height mirror polished stainless steel center panel

MilkyWay

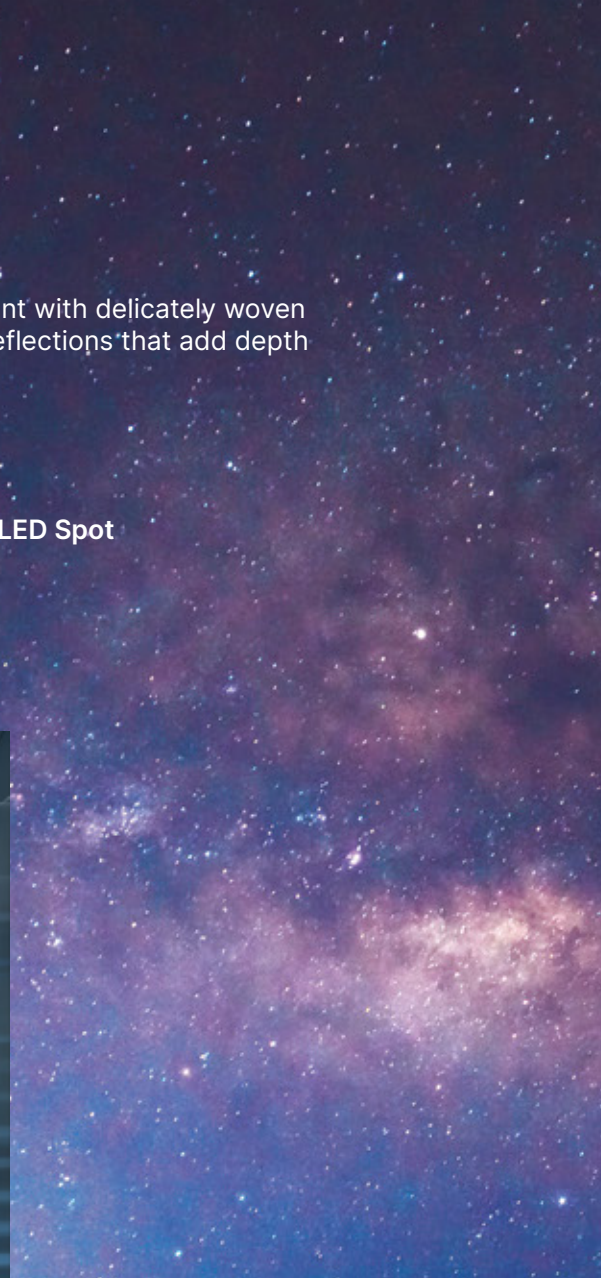
LIMITS PUSHED LITTLE FURTHER

Ten cars presented in three finishes, designed around the space element with delicately woven gradient patterns, futuristic COP, deep shades and a play of graceful reflections that add depth to an extraordinary premium look.

Element : Space

Interior Finish : Solid Shades, Stainless Steel, Exotic Motif

Luminaires : Ring LED Light, Round LED Spot, Hue LED Spot & Square LED Spot



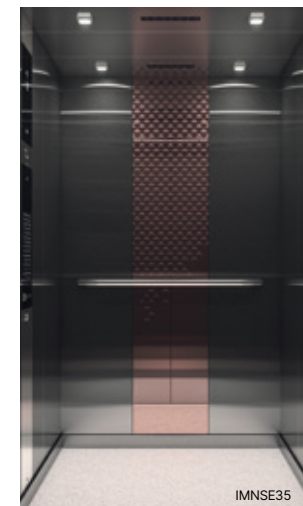
Exotic Motif

Gradient pattern depicts infinity of the galaxy while the radiating array of stars added in rich blue hues elevates the luxury quotient.



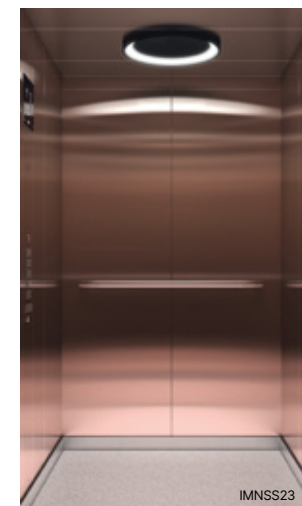
Stainless Steel

Elegance of pearl string pattern etched on mirror polished stainless steel rear wall and stainless steel hairline side walls.



Exotic Motif

Modern gradient pattern etched on rose gold stainless steel enveloped by black hairline stainless steel finish walls and KDS 96 full height touch/touchless COP.



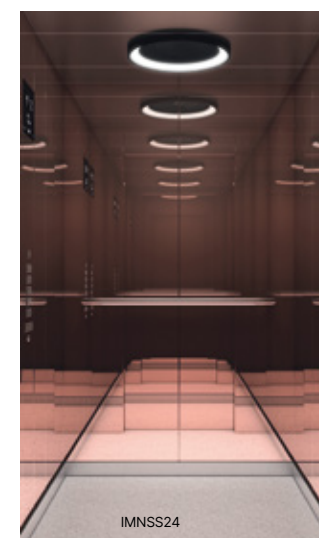
Stainless Steel

Full rose gold hairline stainless steel car, illuminated by award winning ring LED lighting.



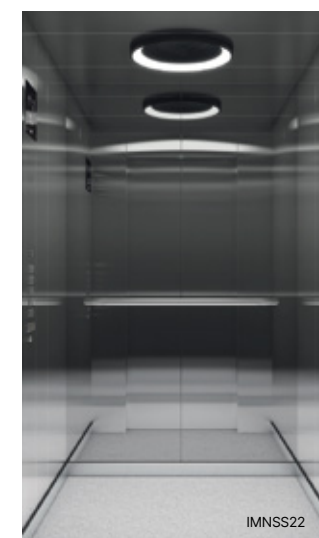
Stainless Steel

Classic full hairline stainless steel walls with contemporary styling.



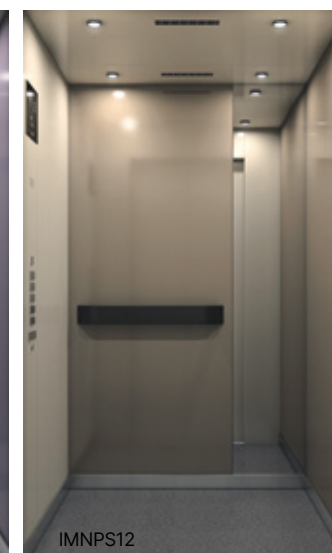
Stainless Steel

Exquisite full mirror polished rose gold stainless steel walls for a modern chic appeal



Stainless Steel

Mirror polished stainless steel rear wall with smooth elegant hairline stainless steel side walls.



Solid Shades

Vivacity of Water lily, Sand beige and Brilliant blue expressed on mirror polished stainless steel rear wall in combination with subtle shaded wall on one side. Rear mirror polished stainless steel panel opens up the feeling of vast space with deep reflections.

For all car models in this brochure, position and number of luminaires and fan will vary according to car size selected.



Next-generation Car Operating Panels

Modern, trendy and futuristic COPs that complete the design fulfilment.

- 1 KDS90 flush mounted COP**
Larger display and big square buttons add to the visual appeal with contemporary looks. Braille buttons option available to make travel easier for differently abled persons.
- 2 KDS93**
Visually ergonomic and functionally versatile Dot-matrix display is crisp and readable, supporting multiple floor nomenclature options. The premium material combinations and appealing layout enhances the overall car ambience.
- 3 KDS96 touchless COP**
Capacitive induction technology empowers users to call and reach their destinations without ever touching a button.
- 4 KDS96 touch COP**
Ready to go with a gentle touch. Smart touch screen interface highlights advanced technology while the black tempered glass and stainless steel combination elevates the premium feel of car ambience.

COP accessories - designed for the trendy look

1 KDS90 flush mounted COP



Also comes with Braille button option

2 KDS93 flush mounted COP



3 KDS96 touch COP

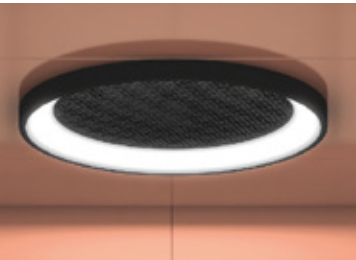


4 KDS96 touchless COP



Luminaires

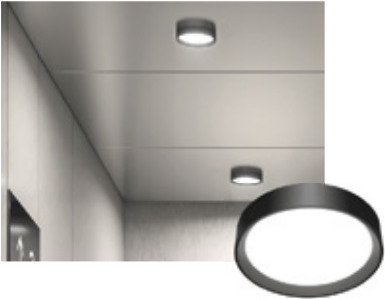
Lightings designed to captivate



Ring LED light

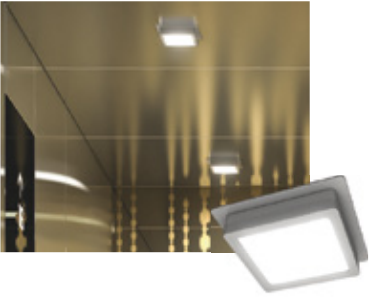
The aesthetically designed award winning RL20 ring LED light adds warmth to the modern car, softly illuminating elevator interiors and brightening up the senses.

*Available only upto 10 passenger car capacity



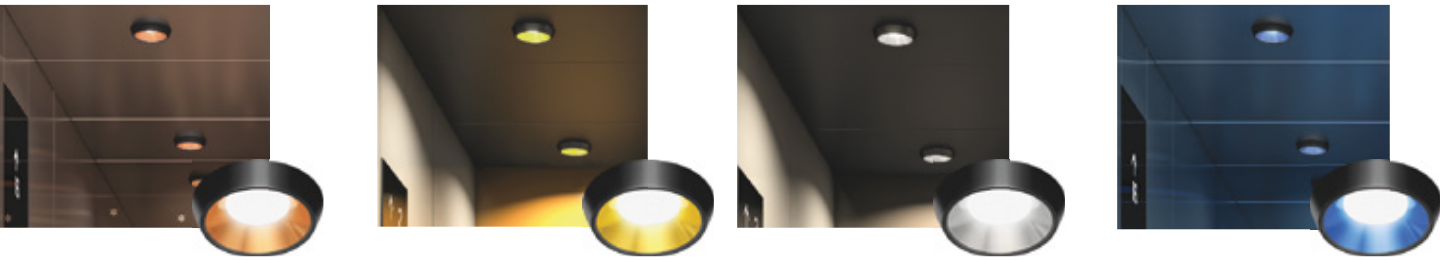
Round LED Spot

Sleek and minimalistic, the RS60 round LED spot light has a novel chamfered element on the bezel and comes with a matte finish diffuser, emitting radiance as even and energetic as natural light.



Square LED Spot

Emanating natural white light, LS4 square LED spot light gives even diffusion inside the car, creating a soothing atmosphere with its simple and symmetric look.



Hue LED Spot

Uniquely designed with tinted reflector cones that emit natural light of same tone as the dominant rear wall color tones. The HS80 Hue LED spot light enhances the design essence throughout the interiors, illuminating the ambience with rich hues & grandness.

KONE RL20 LED lighting design has won
3 Global Design Awards in 2014



Handrails

Ergonomically crafted to lend a modern touch & feel



HR64S Round handrail

Powder coated traffic black sleek handrails further enhance the car's appeal and attractiveness.



HR64S Round handrail

Hairline SS finish sleek handrails that make elegant statements, winterlining, reliability, and durability.



HR60C Curved handrail

Stainless Steel handrail deftly arched to impart modern and stylish elegance.



HR20 Flat handrail

Powder coated traffic black handrails that impart bold and contemporary elegance.

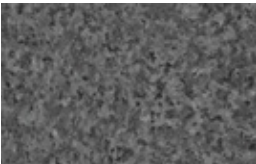


HR40S Flat handrail

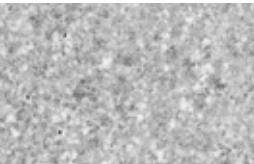
Powder coated mild steel handrails Inspired from the Katana stand of a Ninja warrior.

Floors

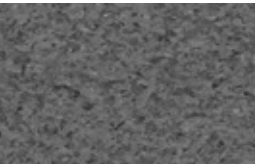
Vinyl flooring options that complete the car



Dark grey flecks



Light grey flecks



Cloud



Silver grey

*Granite Stone flooring available as option (Customer scope)



PureEleganz

Minimalist designs with functional aesthetics. Pure Eleganz in stainless steel and powder coated variants, perfectly suited for every building type




Stainless Steel

Subtle elegance in three shades - water lily, sand beige and brilliant blue on mirror polished stainless steel rear and side walls.







Functional interfaces

Signalization with ease of accessibility



Full height COP

KDS72 Signalization

 <p>Bottom floor Duplex LCI</p>	 <p>Intermediate Duplex LCI</p>	 <p>Top floor Duplex LCI</p>
 <p>Bottom floor Simplex LCI</p>	 <p>Intermediate Simplex LCI</p>	 <p>Top floor Simplex LCI</p>

A minimalistic, modern looking full height signalization design (For car Height of 2100mm & 2200mm with a simple user interface caters the accessibility needs of every user while enhancing the overall people flow experience.

- Also comes with Braille button option
- Stop button removal & Alarm & Intercom button integrated in KDS72

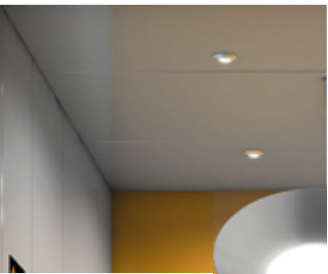
User Centric features

Accessories that lend a refreshing touch



Solid Shades

Indulge in the artistry of three meticulously selected dual-tone wall interiors, each radiating a vibrant and dynamic ambience. Powered by our cutting-edge powder coating technology, these creations provide flawless finish, brought to life by the world's most advanced automated powder coating facility.



Mini Spot

Mini spotlight with metallic finish, a harmonious blend of form and function, enhances light output and enriches the interiors with a graceful and inviting illumination.

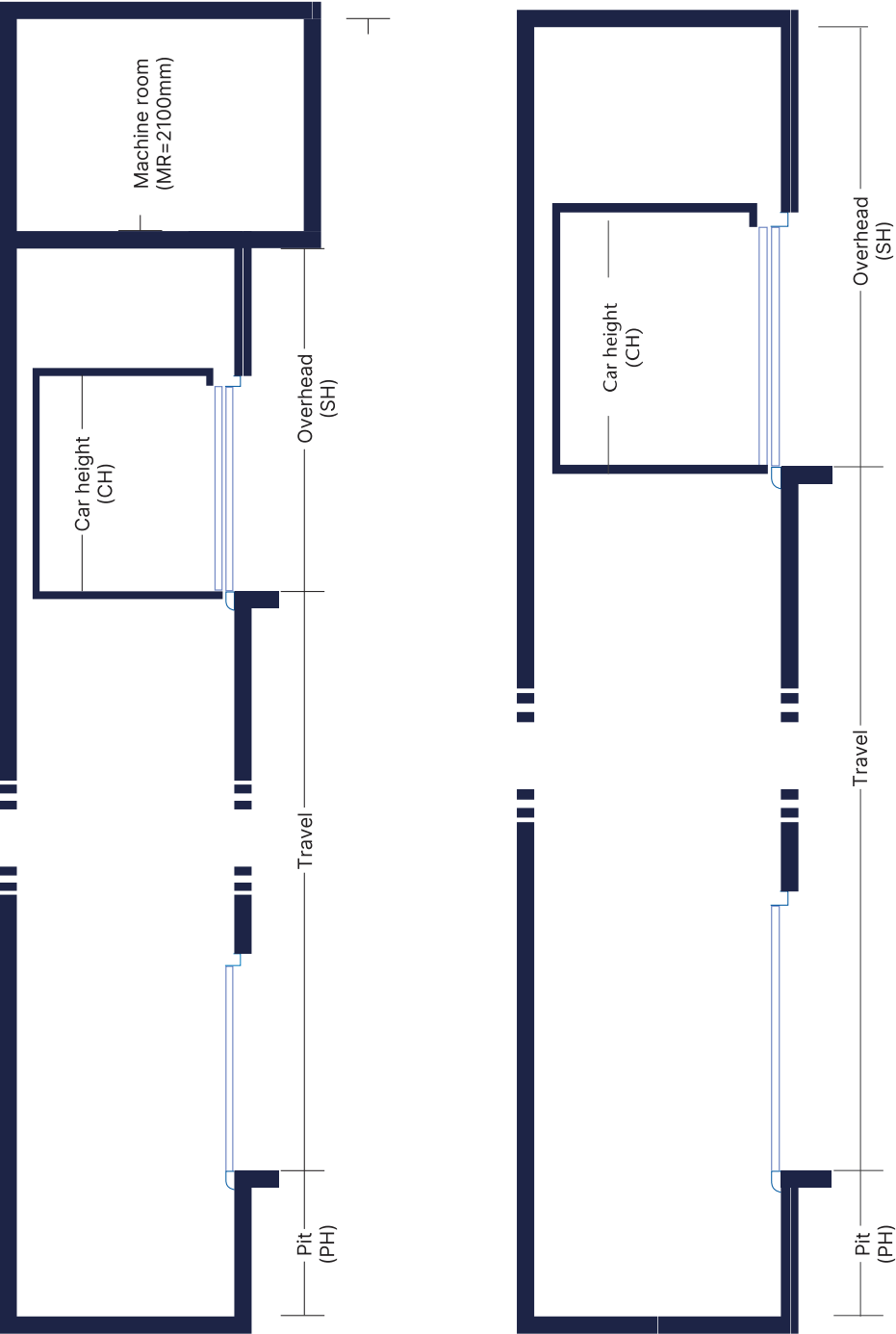


Landing Door

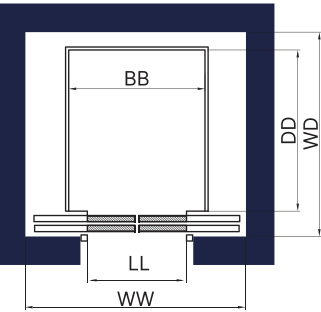
Hammer tone light grey as standard offering for the powder coated car variants. Stainless steel door as standard offering for the SS car variant

Layout and Dimensions

Elevation Layout

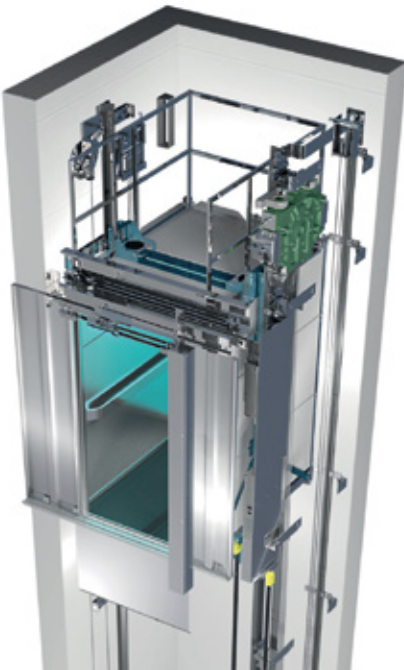


Single entrance car
Centre opening



- WW - Well Width
- WD - Depth
- BB - Car Width
- DD - Car Depth
- LL - Door Opening

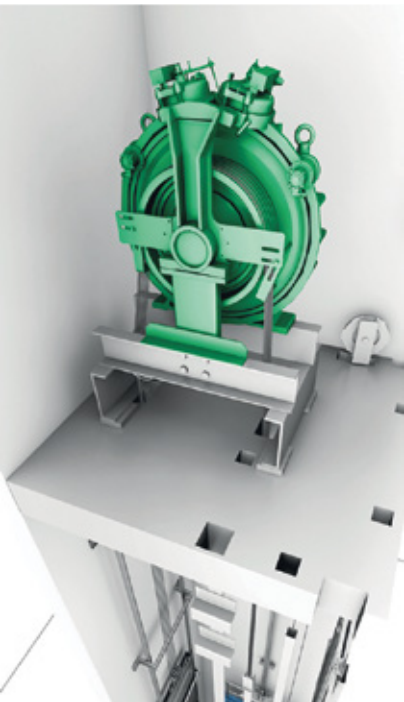
Machine room-less elevators



KONE I MonoSpace® SMART is machine room-less elevator for low, mid and high-rise buildings and comes with a full suite of digitally-enabled safety and connectivity features and best-in-class energy savings.

KONE I MonoSpace® SMART	
Application	Machine-room-less
Max speed	1.75 m/s
Max travel	90 m
Max no. of stops	32
Max load	1020 kgs
Capacity	5 to 15 passengers
Max group size*	2
Control system	Full / Down collective

Compact gearless elevators



KONE I MiniSpace™ SMART is a compact, gearless elevator for mid to high-rise that comes with digitally enabled safety, built-in connectivity and eco-efficient features. Travel height upto 100 meters.

KONE I MiniSpace™ SMART	
Application	Compact machine room
Max speed	1.75 m/s
Max travel	100 m
Max no. of stops	36
Max load	1020 kgs
Capacity	5 to 15 passengers
Max group size*	2
Control system	Full / Down collective

*Available upto 8 car group as option

Features

Standard	
OLF C	Overload Function
Constant	Indication/Buzzer
CEL	Car Emergency Lighting
FRD	Fireman's Drive
ABE M	Alarm Bell
COD	Correction Drive to next level
DCB	Door Close Button
DOB	Door Open Button
SRC	Curtain of Light in car
ACLC	Accurate Relevelling, Automatic, Closed Door
CCB	Car Call Backwards
ATS IN	Attendant service, India

Standard (Energy Saving)	
OCL	Operation of Car Light-Automatic
OCV	Operation of Car Ventilation-Impulse and Automatic
BLF	Bypass Load Function

Optional	
EBD A	Emergency Battery Drive Automatic (ARD)
ISE C	Emergency Intercom car MAP-control room
NUD NB	Nudging
PAD C	Parking at pre-defined floor, door closed
ACU	Lift Announcer (LAS)
ELF	Extra Long Floors
CTV I	CCTV Camera in the car Interface only
ACI	Access control, Interface only
GOC	Acoustic Device for arrival, on Car
BMS	Building Management System, Interface only
ADO/	Advance Door Opening/
ACL B	Accurate Relevelling,
FET	Floor Extension Top
FEB	FEB Floor Extension Bottom
	K-Guard
	Re-Generative Drive
	Counterweight Safety Gear
	Braille Button

Space Saving Solutions

Specifications	KONE I MonoSpace® SMART			I MiniSpace™ SMART (Side CWT)		
Application	Machine-room-less			Compact Machine-room		
Capacity	5P-15P	8P-15P	8P-15P	5P-15P	8P-15P	8P-15P
Speed (m/s)	1	1.6	1.75	1	1.6	1.75
Standard car inside height (CH) mm	2100 / 2200 / 2300			2100 / 2200 / 2300		
Standard door height (HH) mm	2000/2100			2000/2100		
Maximum travel (m)	55	90	90	55	90	100
Standard pit height (PH) mm	1400	1500	1500	1400	1500	1500
Standard headroom height (SH) mm	CH+1500	CH+1650	CH+1650	CH+1500	CH+1650	CH+1650

* CH 2100mm available for KDS72 signalization only



Shaft Information

KONE I MonoSpace® SMART and KONE I MiniSpace™ SMART

					Centre Opening	
No.of Persons	Load (kgs)	Car Width BB (mm)	Car Depth DD (mm)	Door Opening LL (mm)	Shaft Width WW (mm)	Shaft Depth WW (mm)
5	340	950	1000	700	1550	1475
6	408	950	1150	700	1550	1525
6	408	1100	1000	700	1650	1475
6	408	950	1150	800	1750	1525
6	408	1100	1000	800	1750	1475
7	476	950	1250	700	1550	1575
8 (upto 75m)	544	1100	1300	700	1675	1600
8 (upto 75m)	544	1100	1300	800	1775	1600
8 (upto 75m)	544	950	1400	700	1575	1700
8 (upto 75m)	544	1300	1100	800	1875	1500
8 (upto 100m)	544	1100	1300	700	1675	1775
8 (upto 100m)	544	1100	1300	800	1775	1775
8 (upto 100m)	544	950	1400	700	1575	1825
8 (upto 100m)	544	1300	1100	800	1875	1675
10 (upto 55m)	680	1300	1350	800	1875	1650
10 (upto 55m)	680	1100	1600	800	1775	1900
10 (upto 100m)	680	1300	1350	800	1875	1800
10 (upto 100m)	680	1100	1600	800	1775	1925
13	884	1600	1350	900	2175	1800
13	884	1600	1350	1000	2175	1800
13	884	1100	2000	800	1775	2300
13	884	1100	2000	900	1950	2300
15	1020	1600	1500	900	2175	1875
15	1020	1600	1500	1000	2175	1875
15	1020	1100	2150	800	1775	2450
15	1020	1100	2150	900	1950	2450

Please Note

All shaft measurements specified are taken over plaster.

Shaft dimensions are to be maintained to a tolerance of 0, +25mm. For minimum shaft sizes, contact customer engineering for details.

Above mentioned shaft gears are for without CWT safety gear. For CWT safety gear, case will vary.



Trusted partner for the lifetime of your building

Your journey with KONE is a simple one. In a complex project, the pressure to stay on schedule and within plan is high. Our people and partners, from installers, site supervisors and project managers, are fully committed to the highest customer satisfaction in the industry. That is why we have the best processes and tools to support you every step of the way.

Professional Project Management

When you buy a solution from KONE, you're getting far more than just equipment and installation. Every single project we handle is led by a professional project manager with solid experience of running similar projects.

Site Readiness

To make sure everything we need is in place before we begin installation, we can monitor and report the readiness state of the site.

Efficient Installation

The KONE elevator installation process doesn't require scaffolding, which cuts costs and minimizes disruption to other construction work on site.

Quality Assurance and Maintenance

Before your elevator is handed over, we take every necessary measure to ensure that you're taking delivery of a high-quality solution that will run as it should from day one.



We move 2 billion people every day

We are a global leader in the elevator and escalator industry, making people's journeys safe, convenient, and reliable with smart and sustainable People Flow®. We shape the future of cities. In a world where cities are constantly evolving and more and more people choose to live in them, we at KONE stand with one clear aim: to shape the future of cities. We help cities leave a positive mark on the planet - for the next century and beyond. We shape the future of cities.

100+ Years
founded in
Finland in 1910

40+ Years
of operations
in India

140+ Countries
operations across
the globe

6,00,000+ Customers
builders, building owners,
facility managers, architects

At KONE, our purpose is to shape the future of cities. As a global leader in the elevator and escalator industry, we move two billion people every day, making their journeys safe, convenient, and reliable with smart and sustainable People Flow®. As a trusted partner throughout both the building and equipment lifecycle, we support our customers every step of the way: from design, manufacturing and installation to maintenance and modernization. We are fast and flexible, earning a well-deserved reputation as a technology leader, with innovations such as KONE 24/7 Connected Services and KONE UltraRope®. KONE employs over 60,000 experts in over 60 countries, to serve you globally and locally.

KONE Elevator India Private Limited

Factory and Registered Office:

Plot No : A 28, SIPCOT Industrial Park, Pillaipakkam, Sriperumbudur Taluk, Kancheepuram District – 602105.

Corporate Office:

Centre Court, 9th Floor, Nexus Vijaya Mall, No.183, NSK Salai, Arcot Road, Vadapalani, Chennai - 600 026. India

Tel.No: +91 44 6625 4000

Toll Free Service Number:

1800 108 1234 / 1800 425 4254

Visit us at www.KONE.in